



assisted living | dementia care

## Epoch Bulletin

June 2023



### Why Is My Loved One With Dementia Sometimes ‘There’ and Sometimes Not?

Author: Yen Ying Lim, Monash University

“People living with dementia can sometimes be fully “present,” knowing who is around them, where they are, and what’s happening. And then other times they may be confused, disorientated, unaware of their surroundings and unfamiliar with loved ones” .....(Contd.)

[Read the full article here](#)

## What our expert at Epoch has to say!

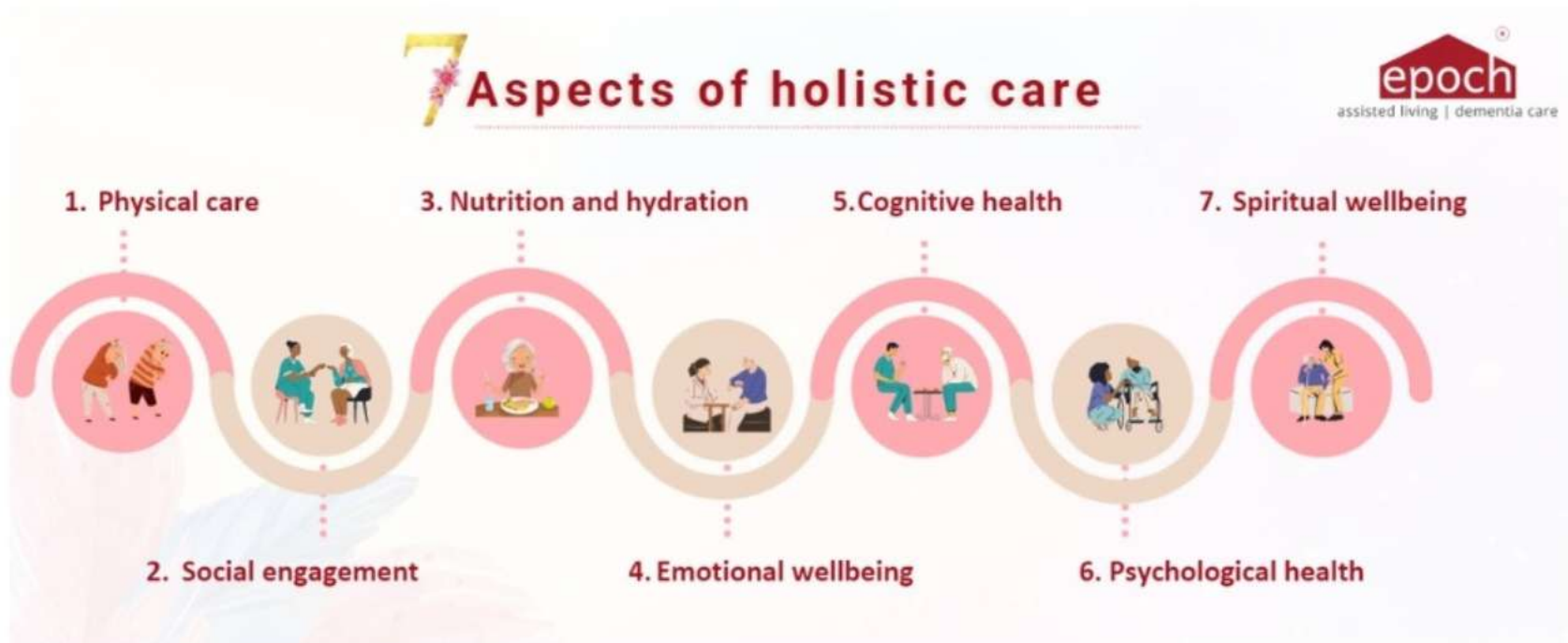


The symptoms and course of dementia can be very unpredictable because of its etiology. Very little is known about the neurobiology of the presence or absence of symptoms but to put it simply- we see symptoms when the connections in the brain are lost. Many a times the connections are re-established and we see the person talk or behave like their old self. They are not doing this on purpose, is the most important thing for us to understand

- Neha Sinha  
Co-founder & CEO, Epoch Elder Care



[Click here to know more about Epoch Dementia Care Program](#)



“What truly is the definition of elder care? A lot of people connote elder care with medical or clinical care. A lot of focus and our understanding of caring for the elderly starts and sometimes ends with only focusing on their physical/medical well being. ”

**Prasita Nair**  
Head Of Clinical Operations

[Click here to read the full blog](#)



## Dementia-friendly dining: everything you need to know

Author: **Sussan Norris** (Deputy Digital Editor of Good Housekeeping)

“When experiencing dementia, people’s tastes can really change,” she explains. “They may find food lacks flavour, they look for stronger tastes or find that certain foods they used to like now have a nasty taste to them.” .....(Contd.)

[Read the full article here](#)

 **International Journal of Science and Research (IJSR)** ISSN: 2319-7064  
Call for Papers | Fully Refereed | Open Access | Double Blind Peer Reviewed

Home Members▼ Archive Submission▼ Search▼ Instructions▼ Author Tools▼ Activities▼ Editorial Board▼ Conferences▼ Policies▼

Bookmark Us  
Press Ctrl + D Now!

Quick Links

- > [Current Issue \(June 2023\)](#)
- > [Article Processing Charge](#)
- > [Submit Your Article](#)
- > [Final Submission](#)
- > [Search Published Articles](#)
- > [Researcher's Guide](#)
- > [Recent Publications](#)
- > [Recent e-Presentations](#)

UGC Notification

Peer-Reviewed Journal

Downloads: 0 | Views: 140  
Survey Paper | Psychology and Organizational Management | India | Volume 12 Issue 6, June 2023



### Dementia Management Knowledge, Attitude and Practice of Nurses, Executive Staff and Management from Three Homes of Epoch

Aditi Sharma<sup>1</sup> | Dr. Naganath Narasimhan Prem

**Abstract:** The study aims to assess knowledge, attitude and practice pertaining to professional caregiving and needs of elderly dealing with dementia. The study was conducted on employees of the three homes of Epoch elder care organization. (N=121). Epoch is an expert in assisted living and dementia care in India. Only participants who were employed by the Epoch elder care organization and have served for a minimum period of 6 months were included. Additionally, those staff members who were not willing to participate/or provide consent were excluded. The survey questionnaire consisted of open - ended & close - ended questions around the three domains (namely, knowledge, attitude & practice). The results of the study show that there is a moderate positive correlation of knowledge with attitude and practice. ( $r=.414^{**}$  &  $r=.463^{**}$  respectively). The years of experience at Epoch shows a statistically significant relationship with knowledge ( $p=.028$ ) and the designation at Epoch as well as age shows a statistically significant relationship with attitude ( $p<.001$ ;  $p=.019$ , respectively). The study also found that the maximum

“Epoch Elder Care has got its first research paper published on "Dementia Management Knowledge, Attitude and Practice of Nurses, Executive Staff and Management from Three Homes of Epoch". The paper has been authored by Dr Prem Narasimhan.....(Contd.)

[Read the full article here](#)



*Copyright (C) 2023 Epoch Elder Care Private Limited. All rights reserved.*

Thank you for signing up for our newsletter!

Our mailing address is:

Epoch Elder Care Private Limited  
H 34/16, DLF Phase 1  
Gurgaon, 122002  
India